



advanced FLOW engineering

Instruction Manual P/N: 46-52061

BladeRunner – Street Series Radiator

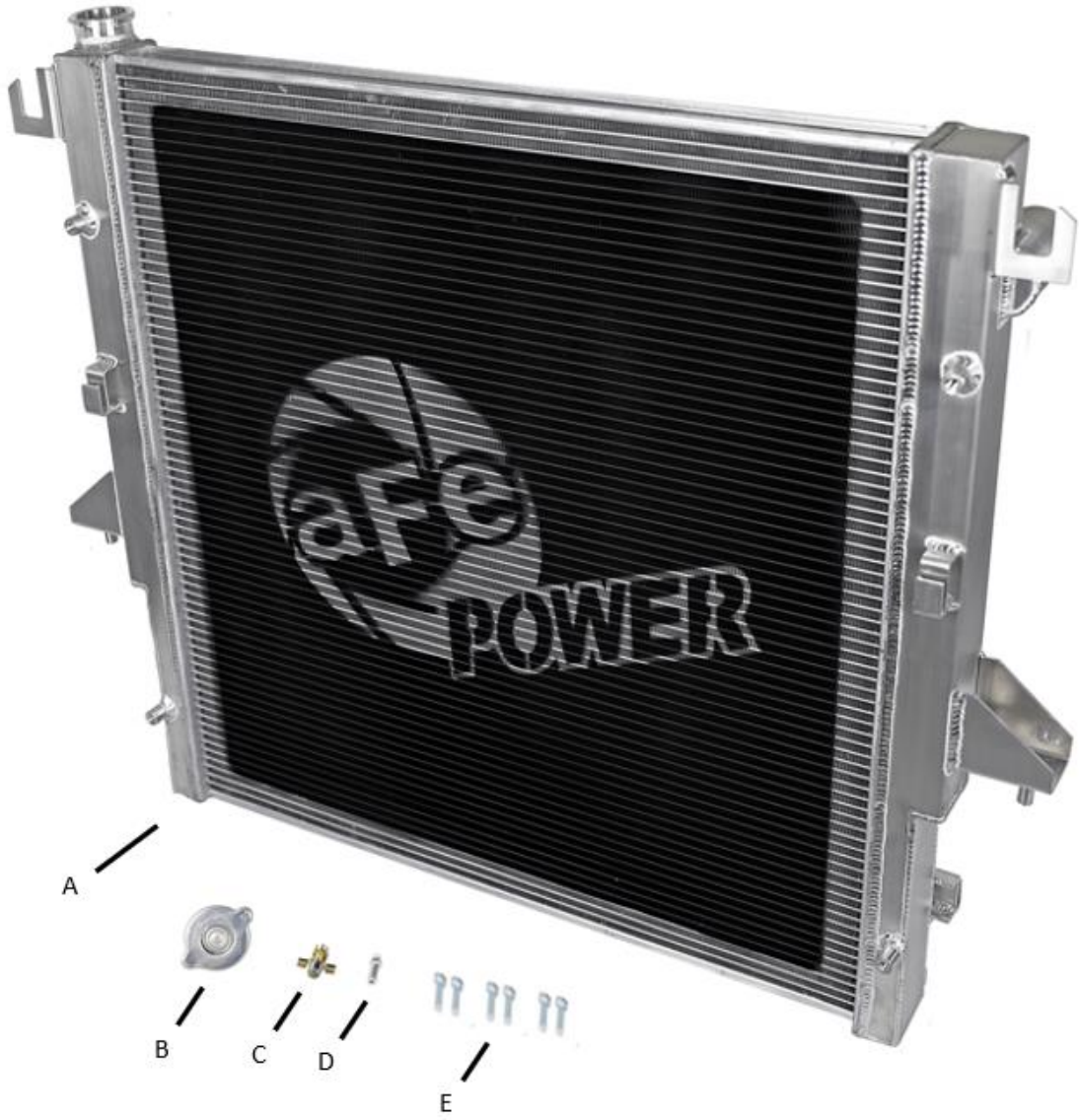
Make: **DODGE** Model: **RAM** Year: **2003-2007** Engine: **L6 - 5.9L(td)**

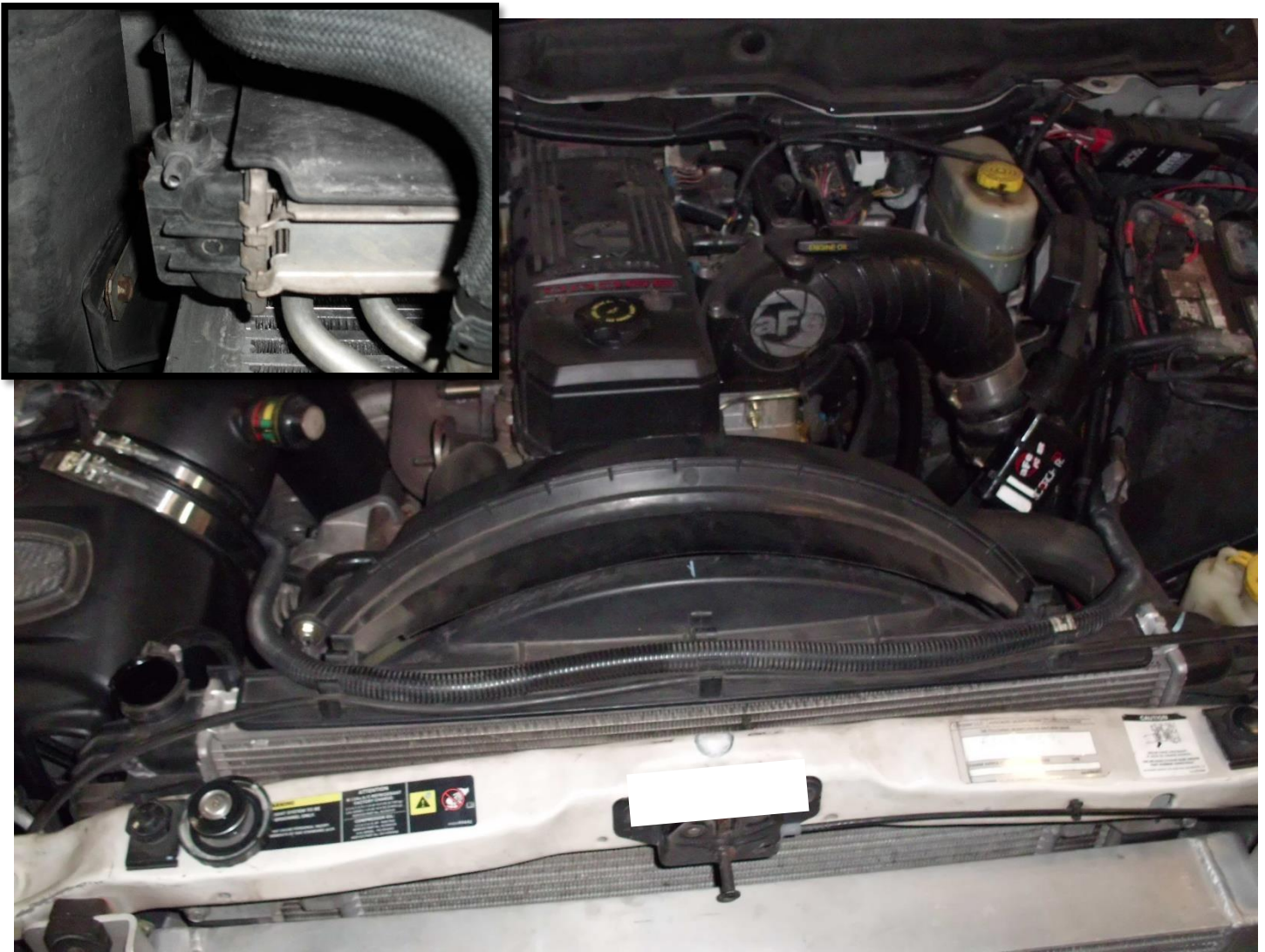
Make: **DODGE** Model: **RAM** Year: **2007.5-2009** Engine: **L6 - 6.7L(td)**



- Please read the entire instruction manual before proceeding.
- Ensure all components listed are present.
- If you are missing any of the components, call customer support at 951-493-7100.
- Ensure you have all necessary tools before proceeding.
- Do not attempt to work on your vehicle when the engine is hot.
- Disconnect the negative battery terminal before proceeding.
- Retain factory parts for future use.

Label	Qty.	Description
A	1	Radiator
B	1	Cap, Radiator
C	1	Valve, Drain
D	1	Fitting, Coolant Over-Flow Barb
E	6	Screw, M8 x 1.25 x 25mm





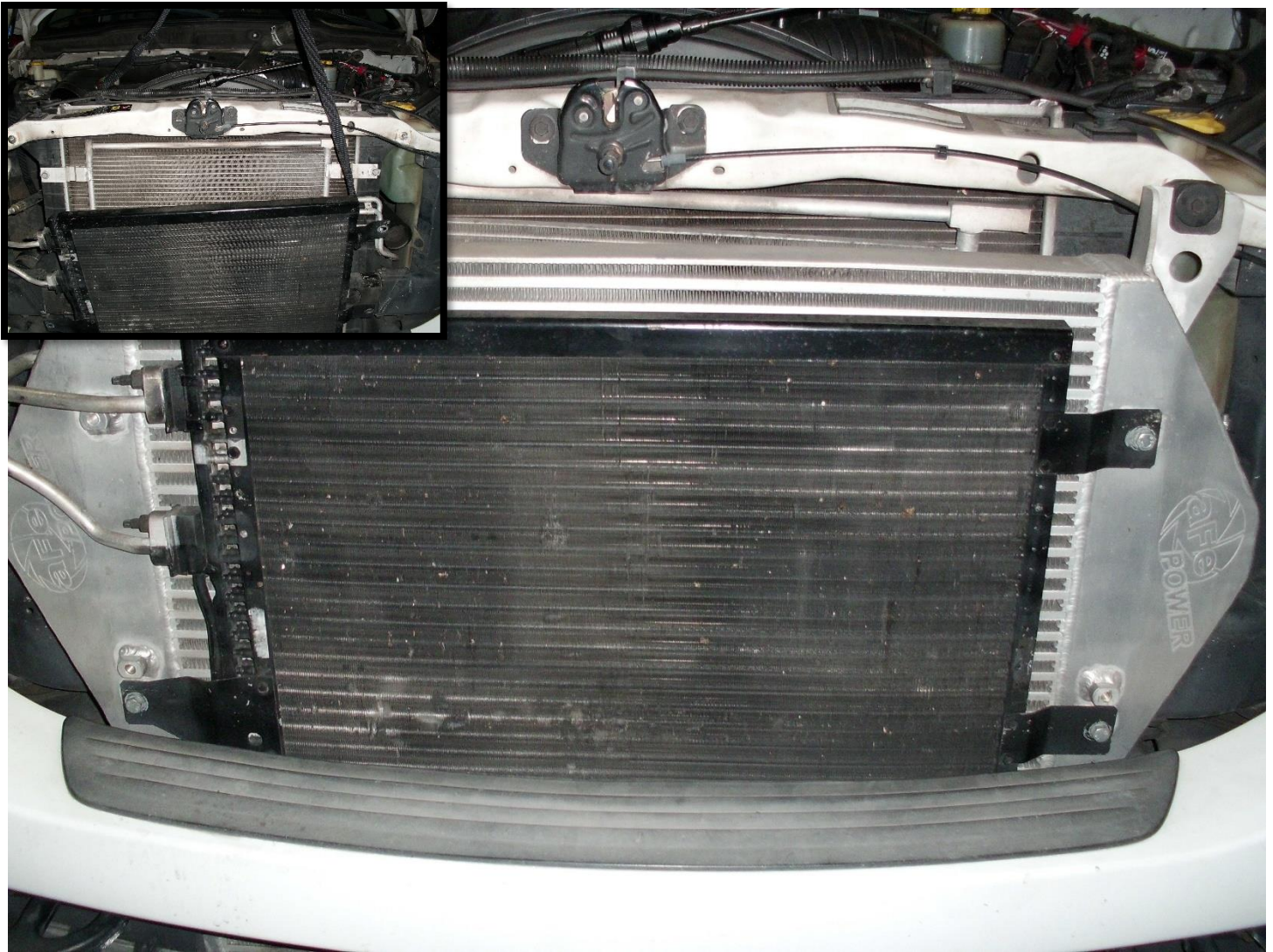
1. Park vehicle on level ground and engage the parking brake.
2. Disconnect both negative battery cables.
3. Open the petcock and begin draining coolant into a drain pan.
4. Remove radiator cap and drain remainder of coolant from the system.



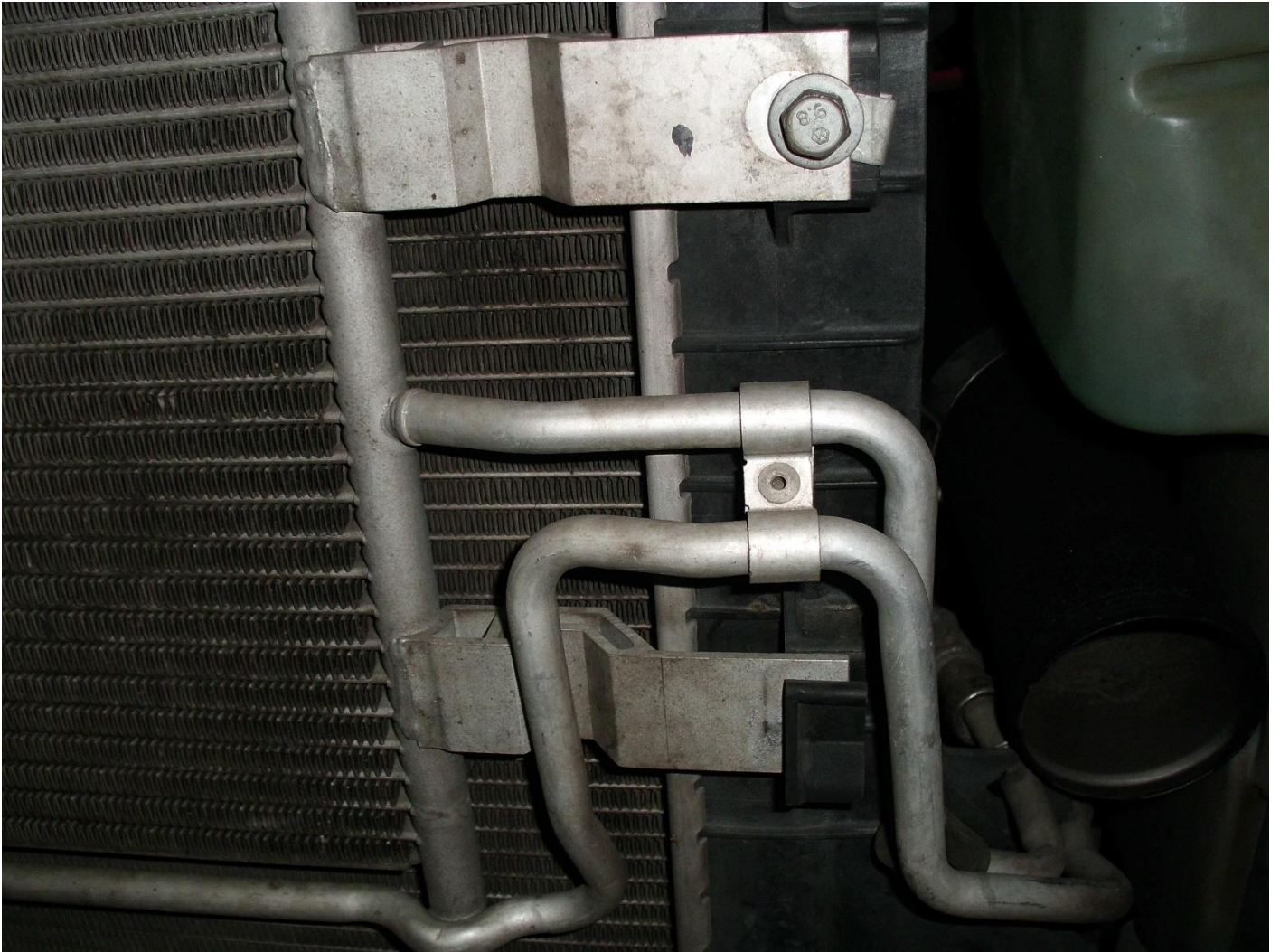
5. Disconnect the electrical connection from the sensor in the air intake tube.
6. Remove the air intake tube from the vehicle.
7. Remove nut securing the air box to the vehicle.
8. Remove the air box from the vehicle.



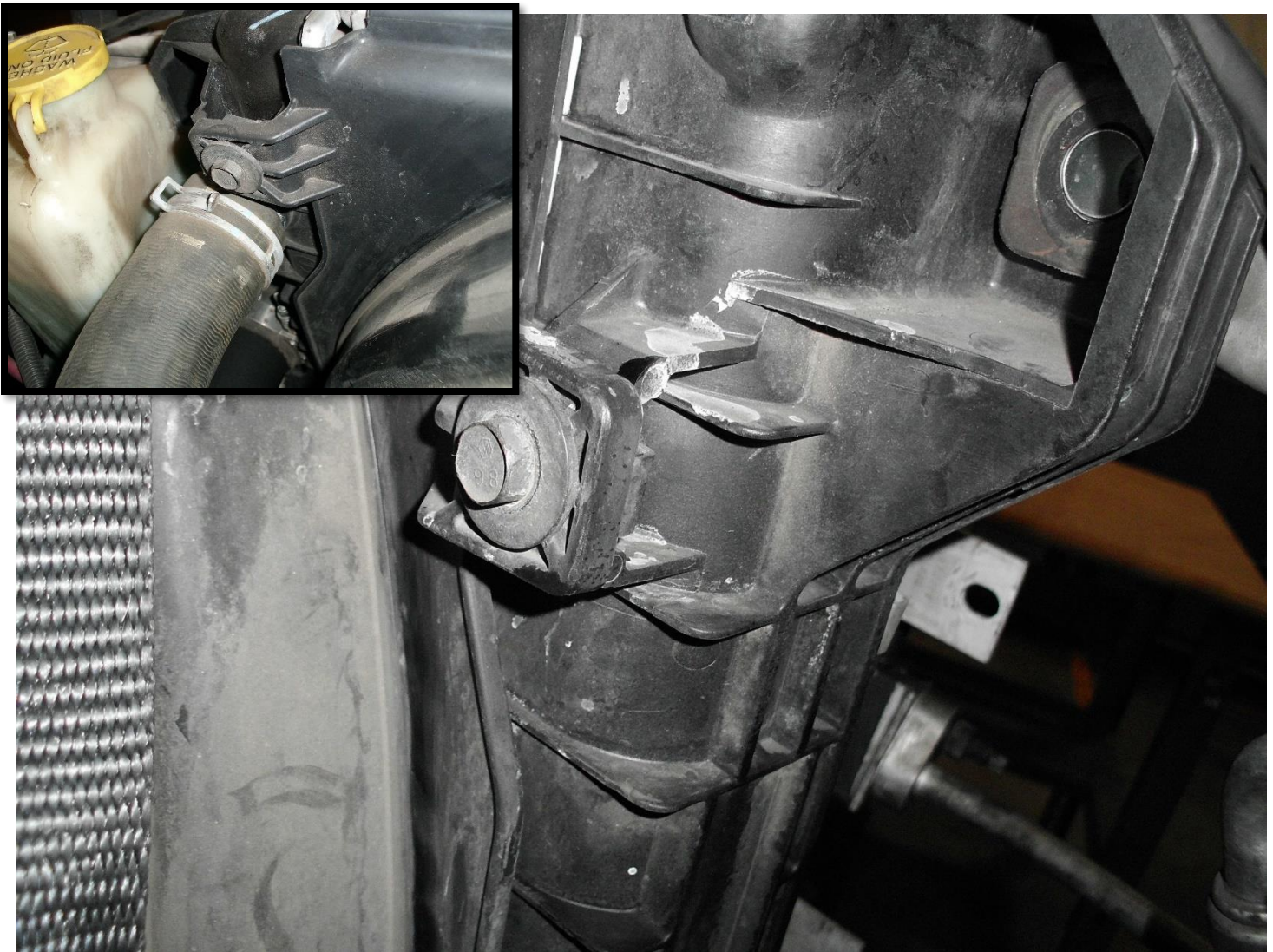
9. Loosen the clamps securing the intercooler couplings to the intercooler and intercooler tubes.
10. Slide the couplings off of the intercooler.



11. Remove the four (4) screws securing the A/C condenser to the intercooler.
12. Using a strap, suspend the A/C condenser up and out of the way.
13. Remove the two (2) screws securing the intercooler to the vehicle.
14. With some help, lift the intercooler up and out of the vehicle.



15. Remove the two (2) screws securing the upper cooler to the radiator.
16. Lift the upper cooler up and out of its saddles then move it out of the way.
17. Remove the two (2) screws securing the lower cooler to the radiator and move it out the way.



18. Disconnect the upper and lower radiator hoses from the radiator.

Note: it may be necessary to use a pick to break the connection between the radiator hoses and the radiator in order to disconnect the radiator hoses from the radiator

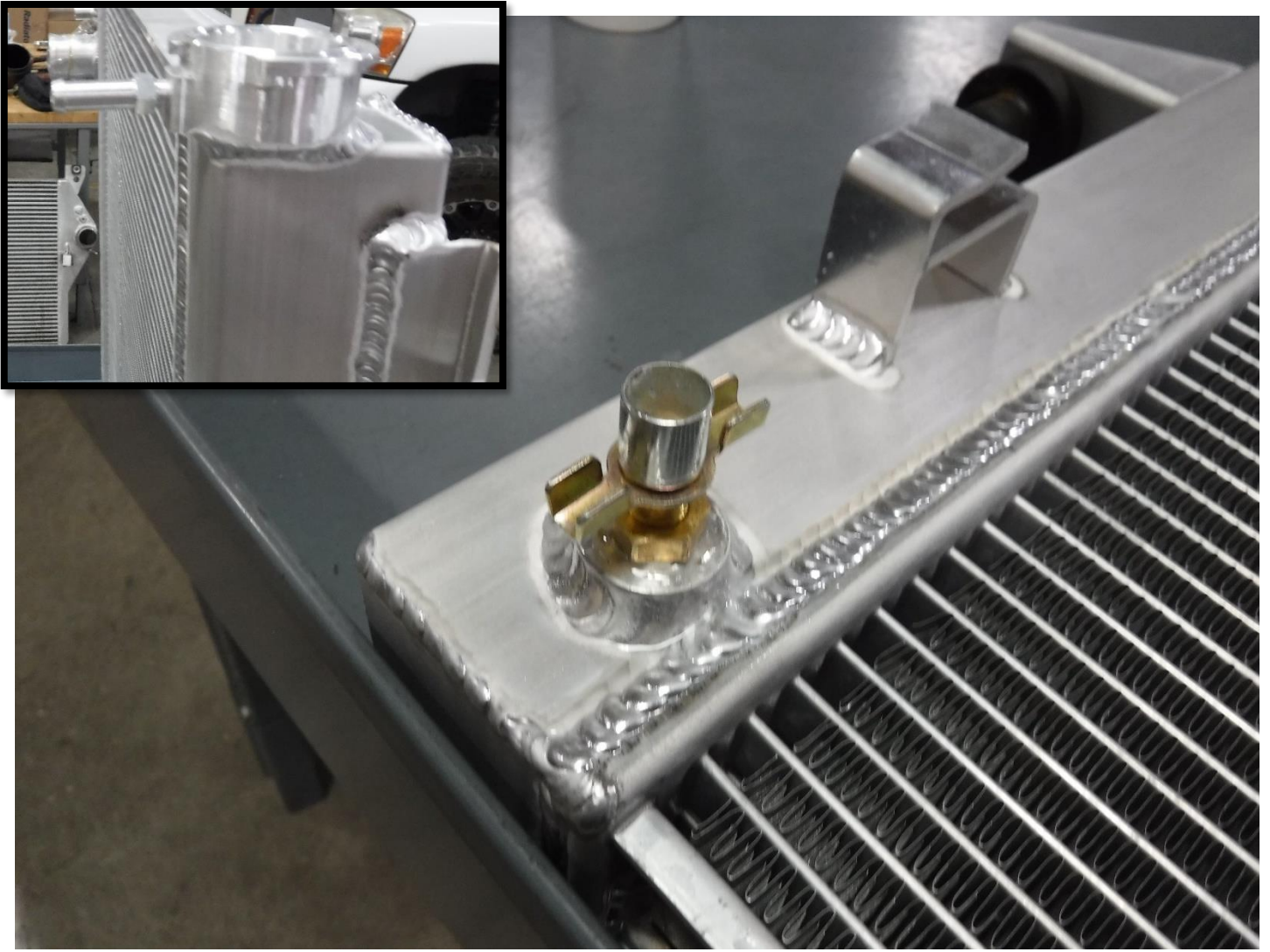
19. Disconnect the over-flow hose from the filler neck on the radiator.

20. Unclip wire harness and windshield washer hose from the top of fan shroud and set aside.

21. Remove the two (2) screws securing the radiator to the upper cross member.



22. Remove the four (4) screws securing the upper cross member to the vehicle and set it to the side
23. With some help, lift the radiator up and out of the vehicle along with the fan shroud.
24. Remove the 2 screws securing the fan shroud to the radiator and remove from the radiator.



Note: Be sure to use thread sealant on the fittings to prevent any leaking

25. Install the supplied drain valve into the fitting on the bottom of the supplied aFe radiator.
26. Install the supplied coolant over-flow barb fitting into the vent port on the aFe radiator filler neck.



27. Transfer all four (4) mounting grommets from the factory radiator to the aFe radiator.
28. Install the fan shroud onto the aFe radiator using two (2) of the supplied M8 x 1.25 x 25mm screws.
29. With some help, install the aFe radiator into the vehicle, making sure the side mounts are in their proper locations.



30. Secure the upper and lower coolers onto the radiator using the four (4) remaining M8 x 1.25 x 25mm screws.
31. Secure the upper cross member into the vehicle.
32. Reinstall the intercooler into the vehicle.
33. Secure the intercooler and radiator to the upper cross member.
34. Secure the A/C condenser to the intercooler.
35. Reconnect the upper and lower radiator hoses to the aFe radiator.
36. Reconnect the intercooler couplings to the intercooler.



37. Place the wire loom and windshield washer hose back into the holding the clips on top of the fan shroud.
38. Reinstall intake air box and air intake tube.
39. Reconnect the electrical connection to the sensor in the air intake tube.
40. Install the over-flow hose onto the coolant over-flow barb fitting on the aFe radiator.
41. Reconnect the negative battery cables.
42. Use the proper coolant refill procedure to be sure that all the air gets out of the system when refilling the coolant.
43. Top off coolant in the radiator, fill the over-flow bottle to the max line, and install the supplied radiator cap.
44. Test drive the vehicle.
45. Let the vehicle cool down then check coolant levels, top off if needed.
Install is now complete!

Note: Be sure to check all connections after 50-100 miles.

This Page Intentionally Left Blank



advanced FLOW engineering, inc.
252 Granite Street Corona, CA 92879
TEL: 951.493.7100 • TECH: 951.493.7100 x23
E-Mail: Tech@aFepower.com