

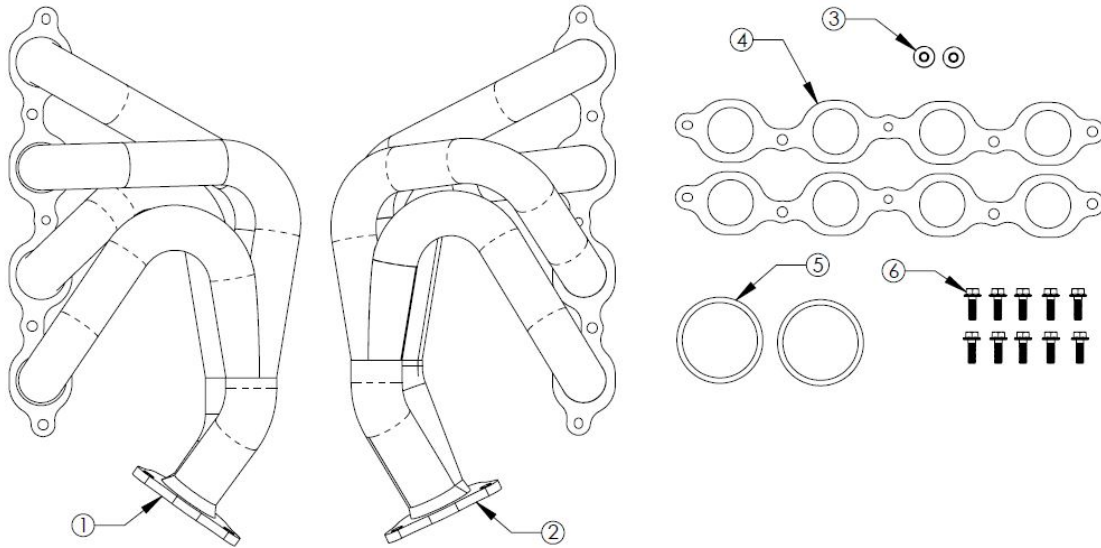


INSTALLATION INSTRUCTIONS

Twisted Steel Headers

MAKE: Chevrolet
MODEL: Corvette C8
YEAR: 2020-2021
ENGINE: V8-6.2L

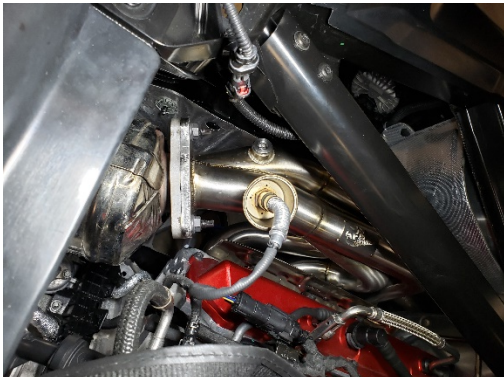
48-34148
 48-34148-H
 48-34148-T



Item	Description	Part Number	Quantity
1	Header Assembly, Left	05-145937	1
1	Header Assembly, Brushed, Left	05-145937H	1
1	Header Assy, Titanium Cerakote, Left	05-145937T	1
2	Header Assembly, Right	05-145938	1
2	Header Assembly, Brushed, Right	05-145938H	1
2	Header Assy, Titanium Cerakote, Right	05-145938T	1
3	Plug, Threaded: M18x1.5	05-46018	2
4	Gasket, Header, Manifold	05-46455	2
5	Gasket, Catalytic Converter Inlet	05-46488	2
6	Bolt, M8 x 1.25 x 25mm	03-50442	10

aFe POWER recommends professional installation on this product. Thoroughly inspect the aFe POWER exhaust system to make sure there is no damage from shipping (if damage is noted, immediately contact aFe POWER customer service). Allow time for your vehicle to cool down prior to installation. When working on your vehicle proceed with caution. Wear protective safety equipment; eye goggles and gloves to ensure a safe installation.

Install band clamps to proper torque specifications of 40-45 ft-lb.





INSTALLATION INSTRUCTIONS

Twisted Steel Headers

MAKE: Chevrolet
MODEL: Corvette C8
YEAR: 2020-2021
ENGINE: V8-6.2L

48-34148
48-34148-H
48-34148-T

1. **(Read instructions prior to installation.)** It is recommended to not fully tighten the exhaust until it has been fully installed. Leave loose for adjustability.
2. Secure vehicle on jack stands (refer to your manual for specified jack stand positions).
3. For faster installation, spread out the parts of the exhaust alongside your vehicle as shown in the diagram above.
4. It is recommended, but not required to remove the spark plugs from the vehicle before removing the factory manifolds and installing the aFe POWER race headers.
5. If the spark plugs are not being removed from the vehicle, skip steps 6,7,8, 26, 27, 28 and 31
6. Lift the rear of the vehicle and support with jack stands.
7. Remove the rear wheels and inner fender liners.
8. Working through the wheel wells, remove the spark plugs and spark plug wires.
9. Remove Panels Located above headers (if equipped)
10. Remove Strut Tower Braces
11. Unplug and remove the O2 Sensors, note their position so they can be reinstalled in the same location.
12. Remove the 8 heat shields connected to the factory manifolds. (11 bolts per side).
13. Remove the 3 nuts per side from the manifold to the catalytic converters.
14. Remove the 10 bolts per side from the manifold to the cylinder heads. And remove the factory manifold and gaskets out of the top of the car.
15. Remove the gaskets at the catalytic converters.
16. Clean the exhaust manifold sealing surface at the cylinder head and catalytic converters.
17. Install the provided gaskets at the catalytic converters.
18. Install the aFe POWER headers and provided gaskets from the top of the vehicle, using the hardware provided.
19. Torque all header bolts to factory specs.
20. Using the original nuts, tighten the aFe POWER headers to the catalytic converters and tighten to factory specs.
21. Install the O2 Sensors onto the inside O2 Bungs, closer to the vehicle centerline, and plug the O2 sensors in the wiring harness.
22. Install the supplied plugs or additional instrumentation to the auxiliary O2 Bungs.
23. When the auxiliary O2 bungs are not plugged, they shall only be used for installing the following instrumentations: pyrometer, lambda sensor, or oxygen sensor. The instrumentation must have a fitting of M18x1.5 thread. To prevent tampering of the emissions control system, instrumentations shall not be connected to the vehicle's electronic control units, and factory sensors shall not be relocated to the bungs.
24. Install the Strut Tower Braces
25. Install the Panels in the engine compartment.
26. Install the spark plugs and spark plug wires.
27. Install the inner fender liners.
28. Install the rear wheels.
29. Ensure that the aFe POWER headers are at a safe clearance from all wires, hoses, etc.
30. Start the vehicle and check for any leaks. If any leaks are found, determine cause and repair as necessary.
31. Remove vehicle from jacks stands.
32. It is recommended to re-tighten all clamps and hardware after 50-100 miles.

**NOTE: Place enclosed CARB EO sticker on or near the device on a smooth, clean surface.
EO identification label is required to pass the smog test inspection.**