



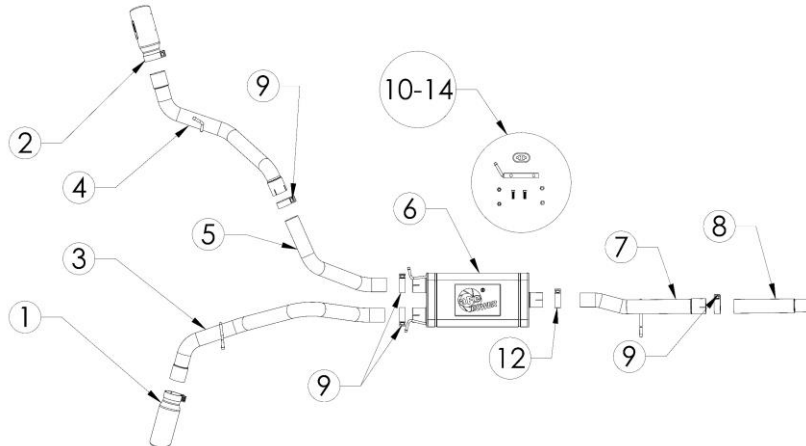
INSTALLATION INSTRUCTIONS

Cat-Back Exhaust

MAKE: GM
MODEL: Silverado/Sierra 1500
YEAR: 2009-2018
ENGINE: V6-4.3L/ V8-4.8L & 5.3L

49-44134-B
 49-44134-P

NOTE: Will Only Fit SC/LB (133" WB)



Item	Description	Part Number	Quantity
1	EXH Tip 3-1/2 In x 4-1/2 Out x 12L Blk	49T35451-B12	1
1	EXH Tip 3-1/2 In x 4-1/2 Out x 12L Pol	49T35451-P12	1
2	EXH Tip 3-1/2 In x 4-1/2 Out x 12L Blk	49T35452-B12	1
2	EXH Tip 3-1/2 In x 4-1/2 Out x 12L Pol	49T35452-P12	1
3	S/A Tube, Right Tail-Pipe: 3" Dia x 69"L	05-144074	1
4	S/A Tube, Left Tail-Pipe: 3" Dia x 47"L	05-144076	1
5	Tube, Left Over-Axle: 3" Dia x 32"L	05-144075	1
6	S/A Muffler Assembly	05-144073	1
7	S/A Tube Mid Pipe: 3" Dia 28" L	05-244076	1
8	S/A Tube Front Pipe	05-244075	1
9	Clamp, Band: 3"	05-41055	5
10	Exhaust Isolation Mount	05-46050	1
11	S/A Hanger Bracket	05-46480	1
12	Washer, Split Lock: 1/2	03-50435	2
13	Screw, Hex Cap: 1/2-13 x 1.5 Gr.8	03-50439	2
14	Nut, Hex: 1/2-13, Gr.5	03-50441	2

aFe POWER recommends professional installation on this product. Thoroughly inspect the aFe POWER exhaust system to make sure there is no damage from shipping (if damage is noted, immediately contact aFe POWER customer service). Allow time for your vehicle to cool down prior to installation. When working on your vehicle proceed with caution. Wear protective safety equipment; eye goggles and gloves to ensure a safe installation.

Install band clamps to proper torque specifications of 40-45 ft-lb.





INSTALLATION INSTRUCTIONS

Cat-Back Exhaust

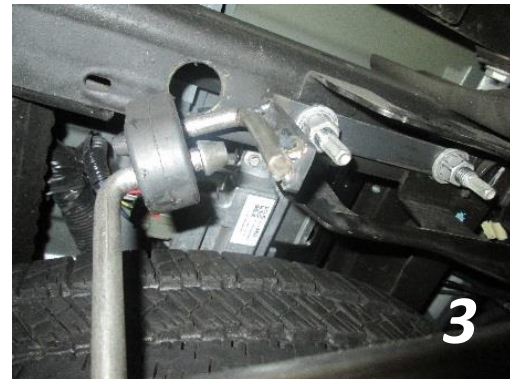
MAKE: GM
MODEL: Silverado/Sierra 1500
YEAR: 2009-2018
ENGINE: V6-4.3L/ V8-4.8L & 5.3L

49-44134-B

49-44134-P

NOTE: Will Only Fit SC/LB (133" WB)

1. **(Read instructions prior to installation.)** It is recommended to not fully tighten the exhaust until it has been fully installed. Leave loose for adjustability.
2. Secure vehicle on jack stands (refer to your manual for specified jack stand positions).
3. For faster installation, spread out the parts of the exhaust alongside your vehicle as shown in the diagram above.
4. Secure the stock exhaust with jack/stands.
5. Remove the stock exhaust. Take caution not to damage the factory front flange, bolts, and isolation mounts as they will be reused.
6. Install the flared front pipe, it will require using the original OE band clamp. You will need to release the locking tab with a small screwdriver. Place the OE band clamp over the front pipe, but do not fully tighten the clamp down.
7. Slide the front part of the muffler into the rear of the Mid Pipe. Then slip the rear hangers of the muffler into the OE rubber isolation mount.
8. Install the Right Passenger Side Tail Pipe first, but do not fully tighten.
9. Now install the hanger bracket included with the kit and using the factory tow package bolts. Unbolt the OE nuts & bolts using a 19mm deep socket on the bottom side and 19mm wrench on the top fully. (If factory tow package bolts are not present, use the provided (x2) lock washer, nuts, and bolts.) **Refer to FIG 2 and FIG 3**



10. Next install the Over-Axle, but do not fully tighten the clamp.
11. Now slip the Left Tail Pipe into the Over-Axle tube, then slide the hanger into the hanger bracket and rubber isolation mount provided. Do not fully tighten down band clamp.
12. Install both tips into the tailpipes. Adjust the tips to your desired position. Do not fully tighten tips yet.
13. Ensure that all the components of the aFe POWER exhaust system are aligned and are at a safe clearance from all wires, hoses, brake lines, body parts, and tires.
14. Start from the front of the aFe POWER exhaust system and evenly tighten all clamps and fasteners.
15. If needed, zip ties are included with your kit to create additional clearances for the Left Tail Pipe axle breather & brake hoses.
16. **Note: You will need at least 1.5" of clearance from your spare tire and the left side of the exhaust. If you need additional clearance loosen your spare tire and move it away from the exhaust until you have the required clearance, then tighten spare tire back up.**
17. Start the vehicle and check for any leaks. If any leaks are found, determine cause and repair as necessary.
18. Remove vehicle from jacks stands.
19. It is recommended to re-tighten all clamps and hardware after 50-100 miles.