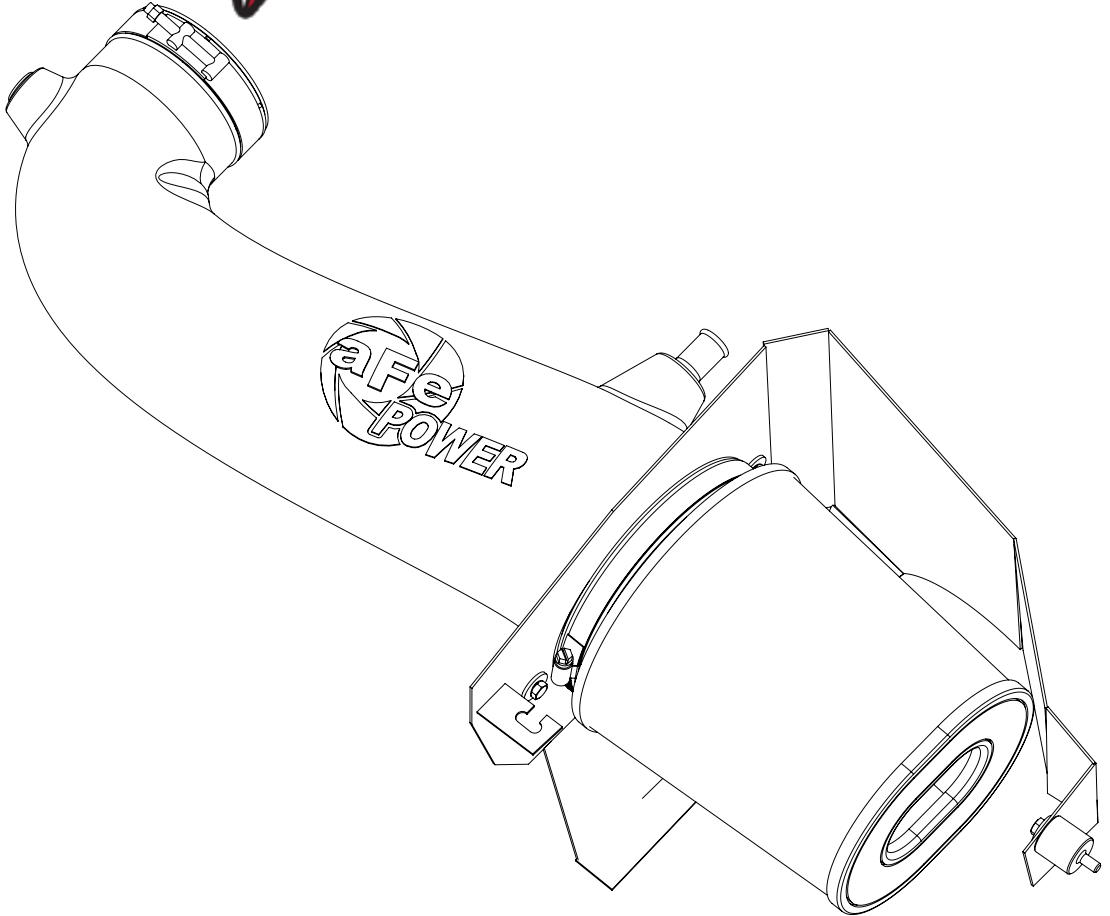


MAGNUM FORCE



advanced FLOW engineering

Magnum FORCE Stage-2 Air Intake System

Instruction Manual P/N: 54-12162 / 51-12162

Make: **Dodge**
Make: **Dodge**
Make: **Chrysler**

Model: **Challenger**
Model: **Charger**
Model: **300C**

Year: **2011-2021**
Year: **2011-2021**
Year: **2011-2021**

Engine: **V8-5.7L HEMI**
Engine: **V8-5.7L HEMI**
Engine: **V8-5.7L HEMI**



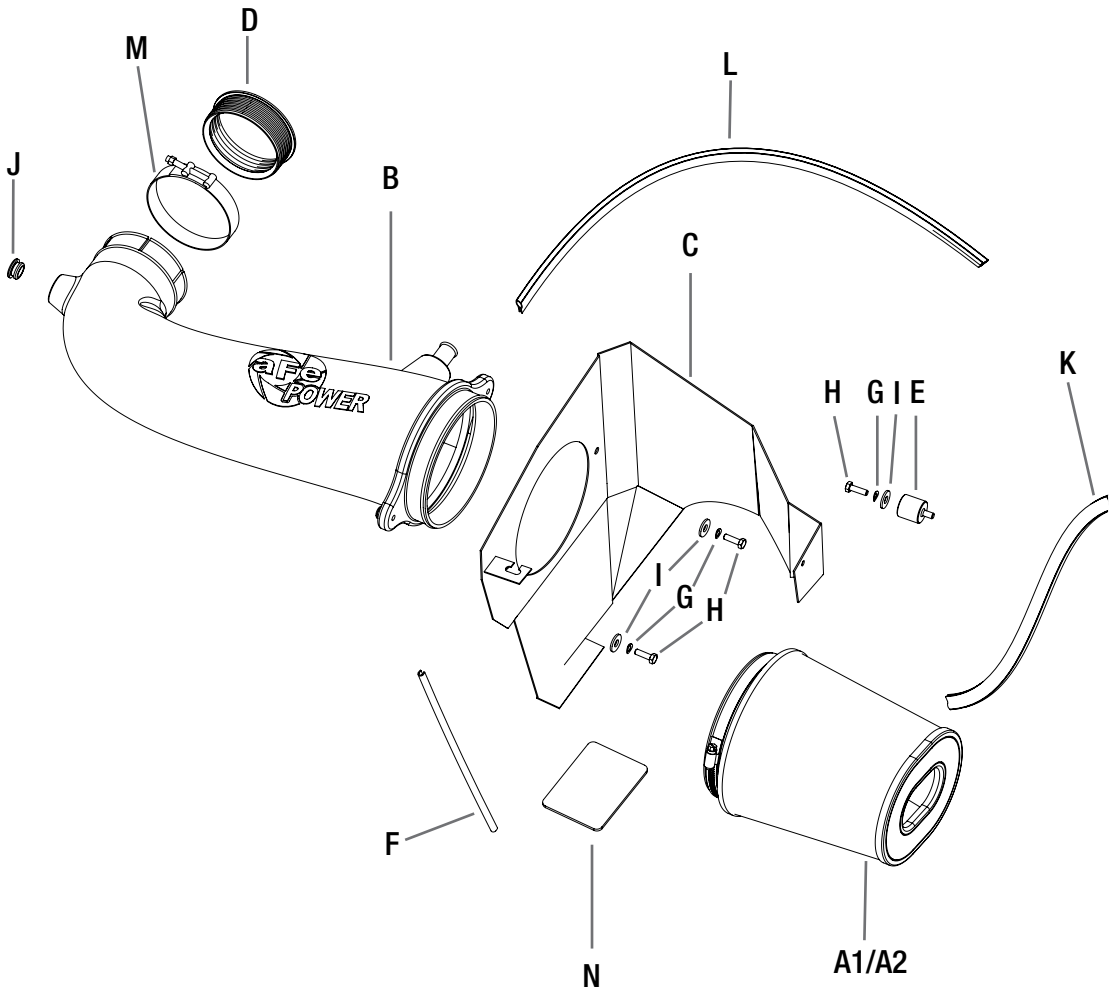
- Please read the entire instruction manual before proceeding.
- Ensure all components listed are present.
- If you are missing any of the components, call customer support at 951-493-7100.
- Ensure you have all necessary tools before proceeding.
- Do not attempt to work on your vehicle when the engine is hot.
- Disconnect the negative battery terminal before proceeding.
- Retain factory parts for future use.

Label	Qty.	Description	Part Number
A1	1	Air Filter (Pro 5R)	24-91053
A2	1	Air Filter (Pro DRY S)	21-91053
B	1	Tube	05-12162B1
C	1	Housing	05-12172B2
D	1	Silicone Coupling	05-01193
E	1	Isolation Mount M6	03-50206
F	1	Trim Seal (12.5 Inches)	05-00149
G	3	Lock Washer M6	03-50071
H	3	Screw Hex M6	03-50052
I	3	Flat Washer M6	03-50070
J	1	Grommet	03-50033
K	1	Seal Trim (16.5 Inches)	05-00072
L	1	Seal Trim (25 Inches)	05-00072
M	1	T-bolt Clamp	03-50265
N	1	Isolation Pad	03-50196

Installation will require the following tools:

8mm Nut Driver (Or Flat Head Screw Driver) 10mm Socket, 10mm Wrench.

Warranty Information available at: <https://afepower.com/contact#warranty>



**Figure A****Refer to Figure A for step 1-5**

Step 1: Remove the engine cover (1) and disconnect the crank case hose (2)

Step 2: Remove the 8mm bolt off the OE air box (3).

Step 3: Loosen the clamp off the OE intake tube (4).

Step 4: Unplug the temp sensor (5).

Step 5: Remove the OE airbox out of the vehicle.



Figure B

Refer to Figure B for steps 6-7

Step 6: Remove the 10mm bolt from the fender side ⑥.

Step 7: Install the furnished isolation mount into the hole from step 6.



Refer to Figure C for steps 8-11

Step 8: Remove the OE grommet and metal insert from the OE housing (7).

Step 9: Install the OE grommet and metal insert onto the aFe housing (8).

Step 10: Install the furnished seal trim onto the outer edge of the aFe housing (9) and isolation pad.

Step 11: Install the aFe housing into the vehicle.



Figure D

Refer to Figure D for steps 12-15

Step 12: Install the furnished silicone coupling onto the throttle body (10).

Step 13: Install the furnished grommet onto the aFe intake tube and place the T-bolt clamp onto the throttle body side of the aFe intake tube.

Step 14: Remove temp sensor from the OE intake tube and install it into the aFe tube (11) with provided grommet installed in step 13.

Step 15: Install the aFe intake tube into the vehicle (12) and secure it to the housing using the furnished hardware.

**Figure E****Refer to Figure E for steps 16-19**

Step 16: Install the OE crank case hose onto the aFe intake tube (13) and reconnect the temp sensor (Note: The crank case hole in the tube is 1/8").

Step 17: Install the air filter onto the aFe intake tube with the furnished clamp.

Step 18: Tighten all connections and reinstall the engine cover removed in step 4.

Step 19. Your installation is now complete!

NOTE: Retighten all connections after approximately 100-200 miles.

Place enclosed CARB EO sticker on or near the device on a smooth, clean surface.

EO identification label is required to pass the smog inspection.

Page left blank intentionally



Page left blank intentionally

Page left blank intentionally



advanced FLOW engineering, inc.
252 Granite Street Corona, CA 92879
TEL: 951.493.7100 • TECH: 951.493.7134
E-Mail: Tech@aFepower.com