

## advanced FLOW engineering

Magnum FORCE Stage-2 Cold Air Intake System

### Instruction Manual P/N: 51-21752 / 54-21752

Make: <b>Chevrolet</b>	Model: <b>Silverado 1500</b>	Year: <b>2009-2013</b>	Engine: <b>V8-4.8L/5.3L/6.0L/6.2L</b>
Make: <b>GMC</b>	Model: <b>Sierra 1500</b>	Year: <b>2009-2013</b>	Engine: <b>V8-4.8L/5.3L/6.0L/6.2L</b>
Make: <b>Chevrolet</b>	Model: <b>Silverado 2500HD</b>	Year: <b>2009-2013</b>	Engine: <b>V8-6.0L</b>
Make: <b>Chevrolet</b>	Model: <b>Silverado 3500HD</b>	Year: <b>2009-2013</b>	Engine: <b>V8-6.0L</b>
Make: <b>GMC</b>	Model: <b>Sierra 2500HD</b>	Year: <b>2009-2013</b>	Engine: <b>V8-6.0L</b>
Make: <b>GMC</b>	Model: <b>Sierra 3500HD</b>	Year: <b>2009-2013</b>	Engine: <b>V8-6.0L</b>

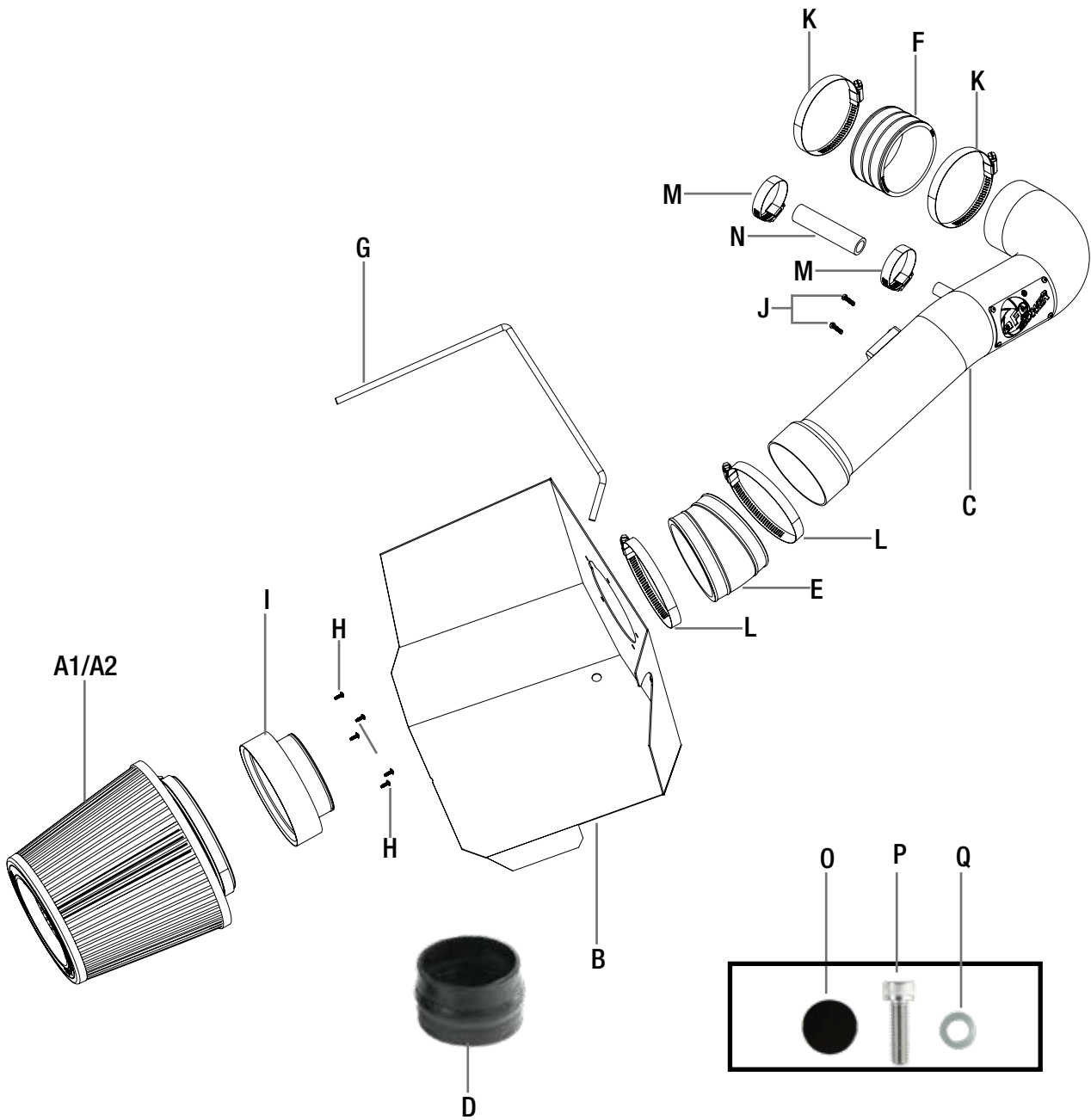


- Please read the entire instruction manual before proceeding.
- Ensure all components listed are present.
- If you are missing any of the components, call customer support at 951-493-7100.
- Ensure you have all necessary tools before proceeding.
- Do not attempt to work on your vehicle when the engine is hot.
- Disconnect the negative battery terminal before proceeding.
- Retain factory parts for future use.

Label	Qty.	Description	Part Number
A1	1	Pro DRY S Air Filter	21-91051 (Gray Media)
A2	1	Pro 5R Air Filter	24-91051 (Blue Media)
B	1	Housing	05-00780
C	1	Tube	05-21752B1
D	1	Coupling, Silicone Hump	05-01264
E	1	Coupling, Reducer	05-01203
F	1	Coupling, Silicone Hump	05-01375
G	1	Seal, Trim (21" inches)	05-00072
H	5	Screw, M6x.1x10	03-50113
I	1	Adaptor	05-00611
J	2	Screw Slotted: M4	03-50034
K	2	Clamp, 056	03-50009
L	2	Clamp, 064	03-50006
M	2	Clamp, Mini 010	03-50078
N	1	Hose, Fuel (12.5" inches)	05-00069
O	1	Plug, Panel 1/2"	05-01180
P	1	Screw, Socket Head Cap	03-50241
Q	1	Washer, Wavy: M6	03-50058

Warranty Information available at <https://afepower.com/contact#warranty>

Note: Legal in California for use on race vehicles only. The use of this device on vehicles used on public streets or high-ways is strictly prohibited in California and others states that have adopted California emission regulations.







**Refer to Figure B for Steps 4-5**

Step 4: Disconnect the MAF sensor harness clip (4) from the OE airbox.

Step 5: Remove OE airbox from vehicle.



**Refer to Figure C for Steps 6-7**

Step 6: Disconnect the OE crank case breathers from the valve covers (as shown) on both sides of the engine.

Step 7: Carefully remove the entire intake tube plenum with the crank case breather plugs attached.

**Figure D****Refer to Figure D for Steps 8-9**

Step 8: Remove MAF sensor (5) from the factory housing.

Step 9: Install MAF sensor (6) from the factory housing into the aFe intake tube using the provided screws.



Figure E

**Refer to Figure E for Steps 10-11**

Step 10: Install filter adaptor (7) using supplied screws onto aFe intake housing.

Step 11: Install seal trim (8) onto upper edge of aFe housing.





Figure F

**Refer to Figure F for Step 12**

Step 12: 2011-2018 V8-6.2L trucks have an extra sensor (9) on the airbox. Transfer this sensor to the new aFe housing. With all other trucks without sensor, plug the unused hole with supplied plastic push plug.

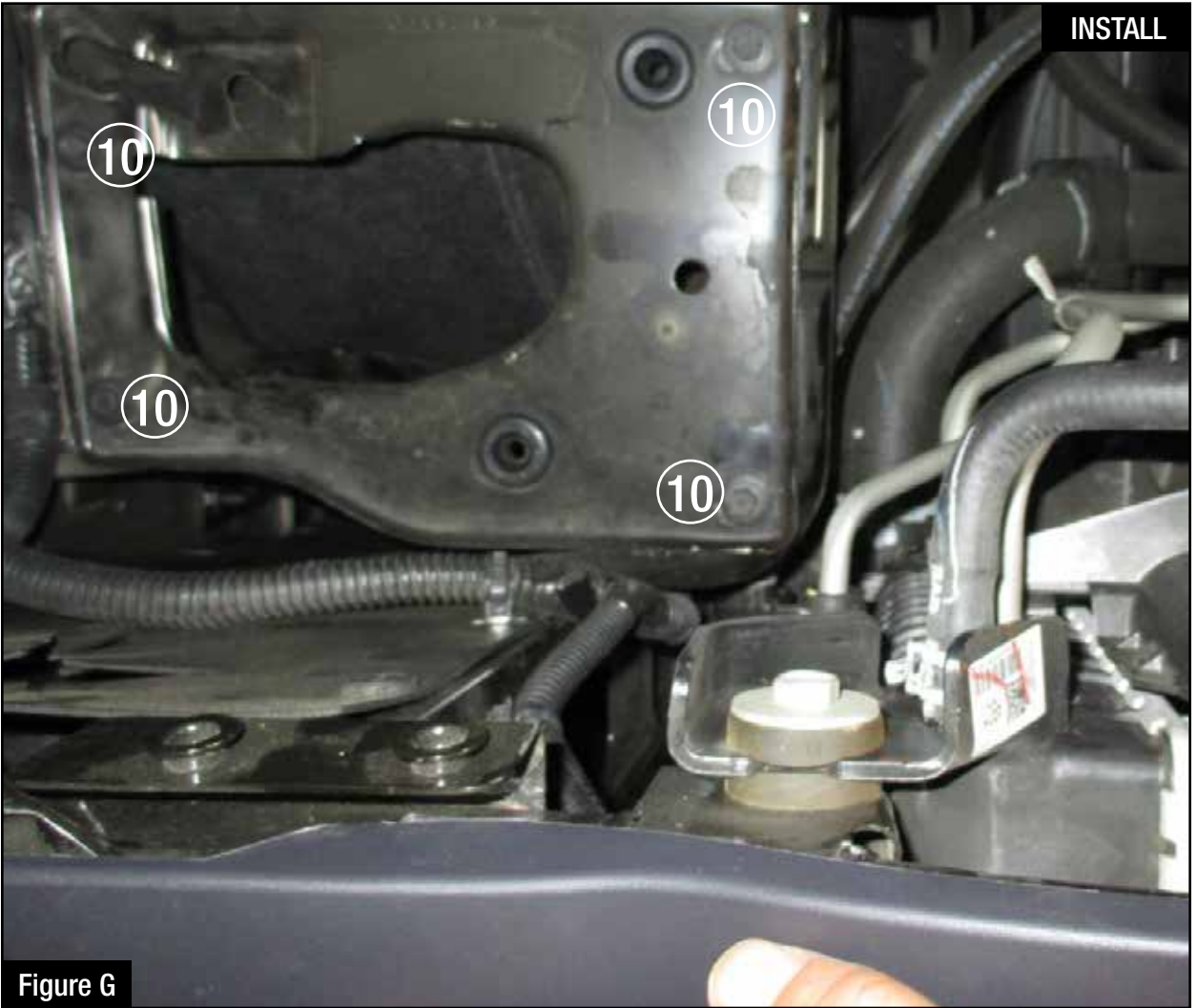
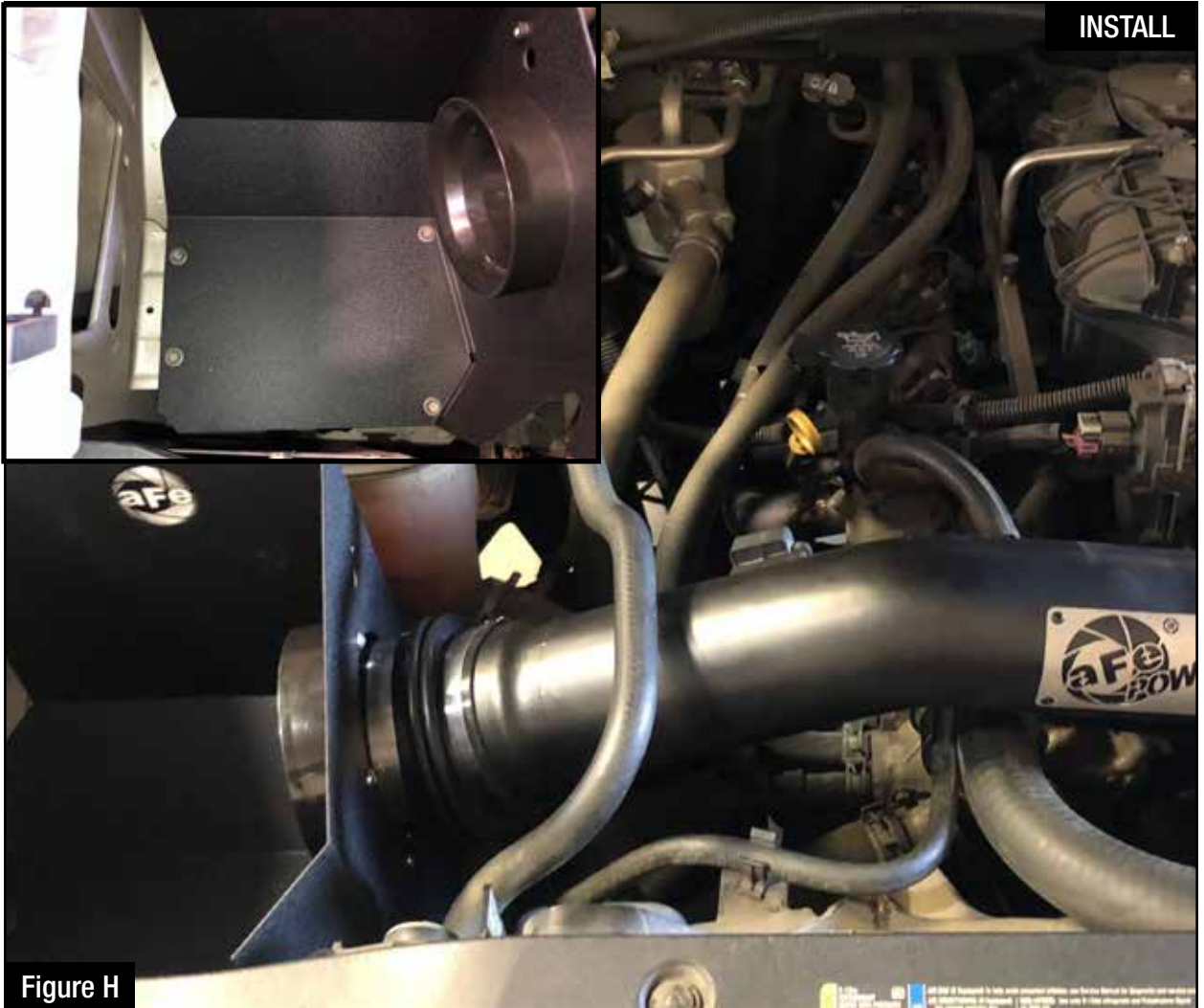


Figure G

**Refer to Figure G for Steps 13-14**

Step 13: Remove the 4 bolts (10) from the stock airbox bracket and save them for later use.

Step 14: Remove airbox bracket from vehicle.



### **Refer to Figure H for Steps 15-18**

Step 15: Using the 4 bolts (12) from Step 13, install the aFe intake housing.

Step 16: Install double hump coupling onto the intake tube with the supplied hose clamp, making sure to line up the end of the tube with the edge of the first bellows.

Step 18: Install double hump coupling onto filter adapter with supplied hose clamp. Make sure bellows coupling is completely seated onto filter adapter while tightening hose clamp.


**Figure 1**
**Refer to Figure 1 for Steps 19-26**

Step 19: Install air filter using supplied screw clamp (14).

Step 20: Install the coupler (15) onto the throttle body with the provided clamps.

Use the hump coupling for V8-5.3L or the reducer coupling for the V8-6.2L

Step 21: Install intake tube onto the throttle body coupler.

Step 22: Adjust double hump coupler and intake tube and tighten clamps.

Step 23: Install supplied crank case breather hose (16) onto engine and intake tube using supplied clamps and tighten.

Step 24: Using pliers reposition coolant hose pinch clamps (17) and hoses on coolant reservoir clockwise to clear intake tube if necessary.

Step 25: Reconnect MAF sensor harness (18).

Step 26: Make sure all clamps and connections are secure. Your installation is now complete.

**NOTE: Place enclosed CARB EO sticker on or near the device on a smooth, clean surface. EO identification label is required to pass the smog test inspection.**

Page left blank intentionally

Page left blank intentionally

Page left blank intentionally



**advanced FLOW engineering, inc.**

252 Granite Street Corona, CA 92879

<https://afepower.com/contact>