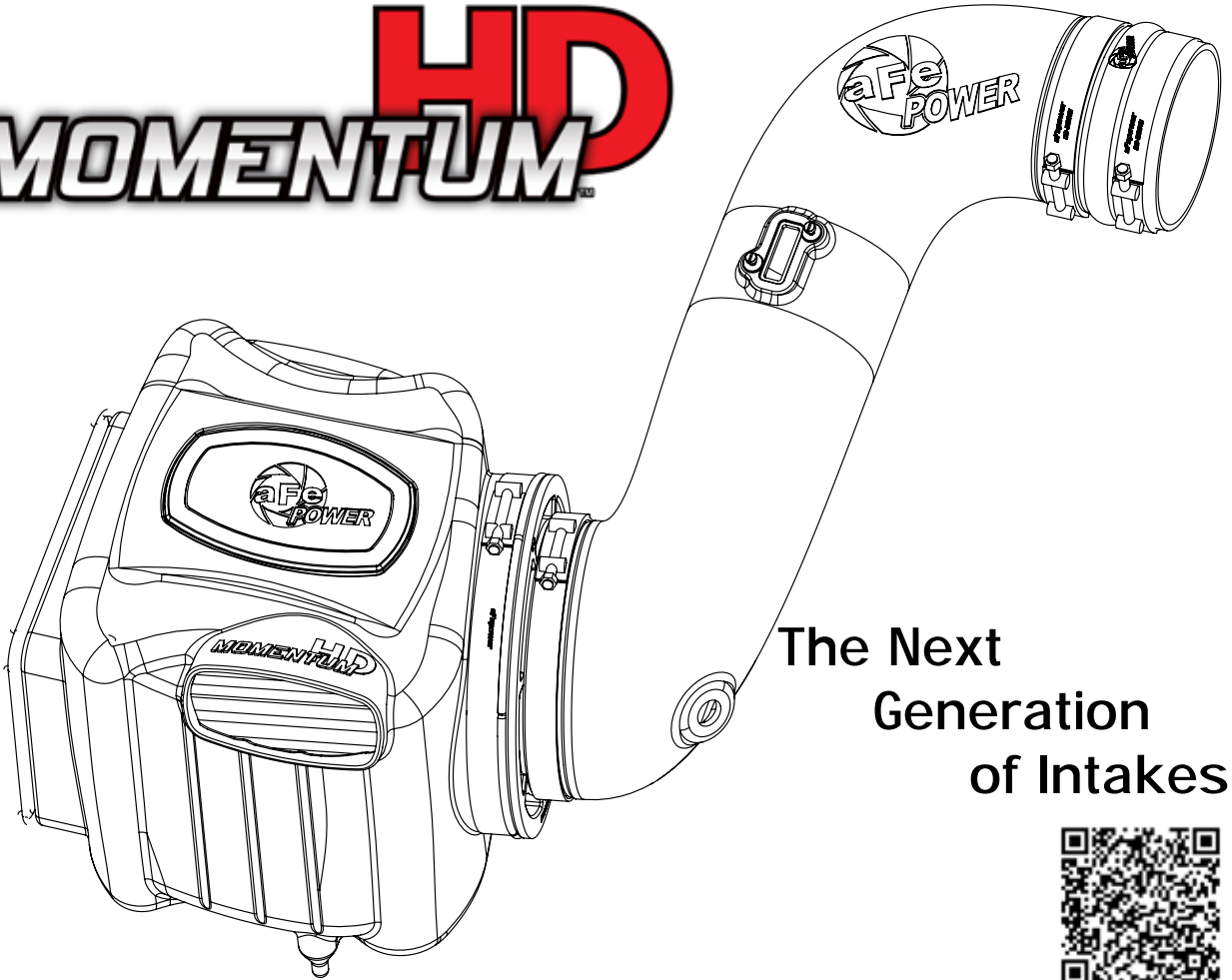


HD
MOMENTUM™



The Next
Generation
of Intakes



advanced FLOW engineering

Instruction Manual P/N: 51-74004/54-74004/75-74004

Make: **GM** Model: **Silverado HD/Sierra HD** Year: **07.5-10** Engine: **V8-6.6L (td) LMM**

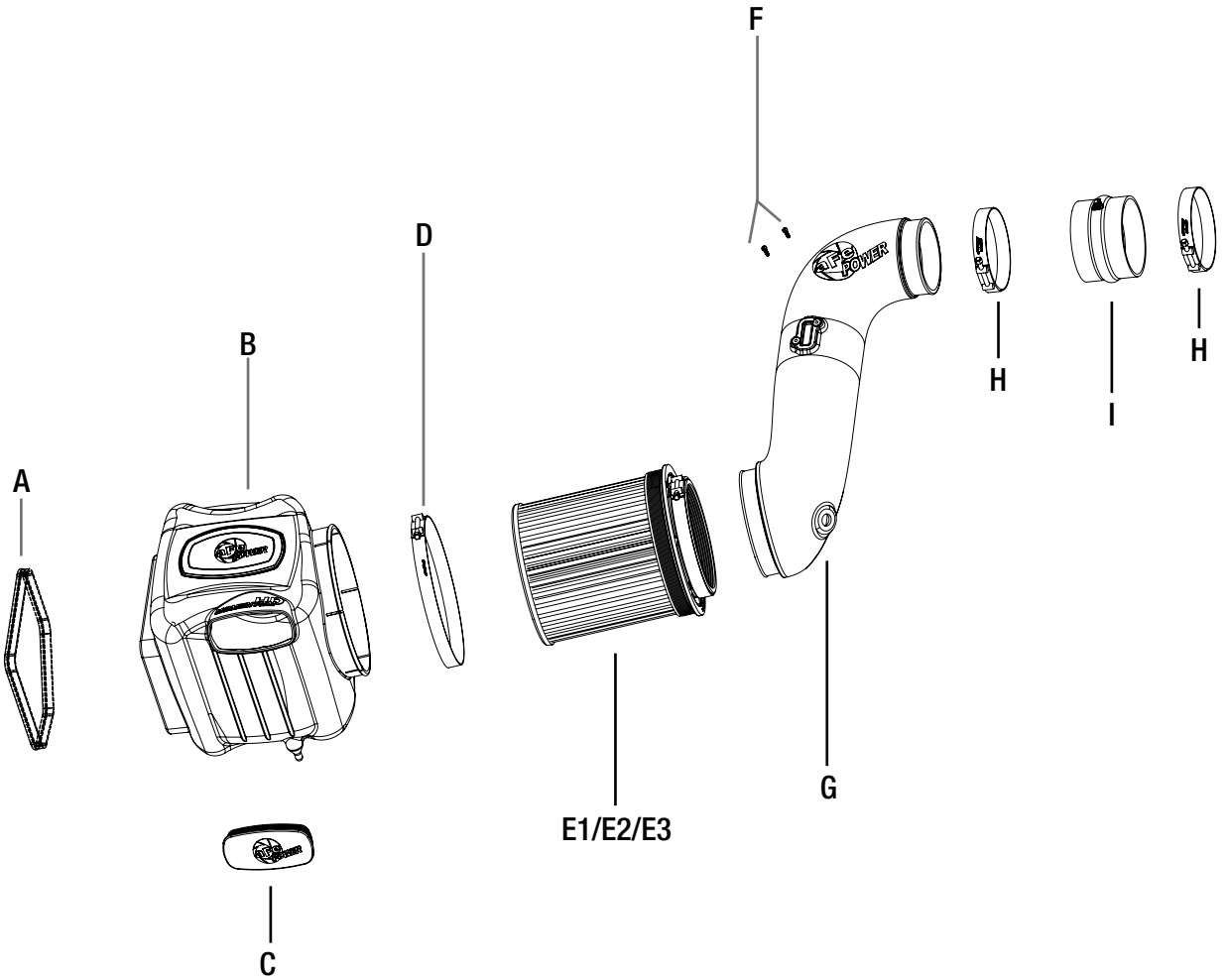


- Please read the entire instruction manual before proceeding.
- Ensure all components listed are present.
- If you are missing any of the components, call customer support at 951-493-7100 or e-mail at tech@afepower.com.
- Ensure you have all necessary tools before proceeding.
- Do not attempt to work on your vehicle when the engine is hot.
- Disconnect the negative battery terminal before proceeding.
- Retain factory parts for future use.

Label	Qty.	Description	Part Number
A	1	Seal, Trim: 7/16" (26"L)	05-00072
B	1	Housing	05-82302B2
C	1	Plug, Urethane	05-01202
D	1	Clamp, T-bolt (8-5/16")	03-50267
E1	1	PRO 5R (Blue Media)	24-91059
E2	1	PRO DRY S (Grey Media)	21-91059
E3	1	PRO-GUARD 7 (Yellow Media)	72-91059
F	2	Screw, Chs Hd: M4	03-50034
G	1	Tube	05-82312B1
H	2	Clamp, T-bolt (4-7/16")	03-50319
I	1	Coupling, Silicone Hump	05-01201

Installation will require the following tools:
8mm Nut driver and 10mm Nut driver.

Note: Legal in California for use on race vehicles only. The use of this device on vehicles used on public streets or highways is strictly prohibited in California and others states that have adopted California emission regulations.



**Refer to Figure A for steps 1-3**

Step 1: Disconnect Mass Air Flow Sensor (1).

Step 2: Loosen all tube clamps using a 8mm nut driver.

Step 3: Remove the factory intake tube and air box out of the vehicle. (Use an upward pull to release the air box from its mounting grommets).



Figure B

Refer to Figure B for steps 4

Step 4: Slide the aFe filter into the air box. Install furnished T-bolt clamps. **Do not tighten at this time.**

IMPORTANT: Prior to installation of T-Bolt clamp, we recommend that you stretch the T-Bolt clamps by installing it in its intended position and tightening.



Refer to Figure C for steps 5-7

Step 5: Install the trim seal on edge of the aFe air box (3).

Step 6: Remove the retaining plug (4) from the bottom of the factory air box.

Step 7: Install the plug on the aFe air box.



Figure D

Refer to Figure D for step 8

Step 8: Install the Momentum HD air box into the vehicle. Firmly push it into the factory mounting grommets.

**Figure E****Refer to Figure E for step 9-13**

Step 9: Remove Mass Air Flow Sensor from the factory air box.

Step 10: Install Mass Air Flow Sensor into the Momentum HD intake tube using supplied screws.

Step 11: Remove the filter minder and grommet from factory air box.

Step 12: Install factory grommet into Momentum HD intake tube, then firmly press filter minder into it.

Step 13: Install furnished silicone hump coupler and T-bolt clamps on the aFe tube. **Do not tighten clamps at this time.**



Figure F

Refer to Figure F for step 14-15

Step 14: Install the Momentum HD tube into the vehicle. Slide the coupling in the turbo inlet tube first. Then rotate the tube down and slide it into the filter.

Step 15: Tighten all clamps.

**Figure G****Refer to Figure G for steps 16-17**

Step 16: Re-connect the Mass Air Flow Sensor.

Step 17: Check all the components are tight and secure. Your installation is now complete. (Use furnished plug to close additional air inlet if you want to completely seal the air box.)

NOTE: Retighten all connections after approximately 100-200 miles.

Page left blank intentionally



Page left blank intentionally

Page left blank intentionally



Air Filters



PRO 10R P/N: 20-91059
PRO DRY S P/N: 21-91059
PRO 5R P/N: 24-91059
PRO-GUARD 7 P/N: 72-91059

Blue Aerosol Restore Kit



P/N: 90-50001

Blue Squeeze Restore Kit



P/N: 90-50501

aFe Power Backpack



P/N: 40-33203

aFe Power Diesel T-Shirt



P/N: 40-30222-G (L)
P/N: 40-30223-G (XL)
P/N: 40-30224-G (2XL)
P/N: 40-30225-G (3XL)

aFe Power Hat



P/N: 40-10114 (S/M)
P/N: 40-10115 (L/XL)

aFe Power Ladies Hat



P/N: 40-10112




SAVE \$25
ON A REPLACEMENT
MOMENTUM
AIR FILTER. TO RECEIVE YOUR DISCOUNT PLEASE CALL
888.901.7693

To purchase any of the items above, view airflow charts, dyno graphs, photos, and video; please go to aFepower.com.

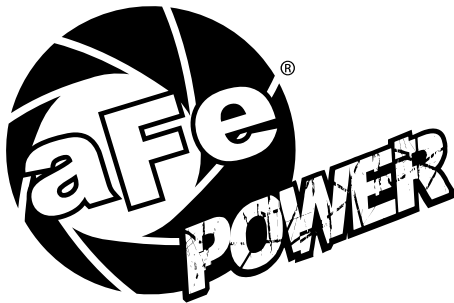
Warranty

General Terms:

- aFe warrants their products to be free from manufacturer's defects due to workmanship and material.
- This warranty applies only to the original purchaser of the product and is non-transferrable.
- Proof of purchase of the aFe product is required for all warranty claims.
- Warranty is valid provided aFe instructions for installation and/or cleaning were properly followed.
- Proper maintenance with regular inspections of product is required to insure warranty coverage.
- Damage due to improper installation, abuse, unauthorized repair or alteration is not warranted.
- Incidental or consequential damages or cost, including installation and removal of part, incurred due to failure of aFe product is not covered under this warranty.
- All warranty is limited to the repair and/or replacement of the aFe part. To request Return Goods Authorization ("RGA"), email RGA@afepower.com or call (951)493-7100. Upon receipt of the RGA, you must return the product to the address provided in the RGA, freight prepaid and accompanied with a dated proof of purchase and the RGA. Upon receipt of the defective product and upon verification of proof of purchase, aFe will either repair or replace the defective product within a reasonable time, not to exceed thirty days.

Product Category	P/N Prefix	Warranty duration
Direct OE Replacement Filters	10, 11, 30, 31, 71, 73	Life of the vehicle
Racing Filters	18	1 year
Universal	21, 24, 72	2 years
Air Intake Systems	50, 51, 54, 55, 75	2 years
Exhaust Systems	49	2 years
Intercoolers & Intercooler Tubes	46-2	2 years
Intake Manifolds	46-1	2 years
Differential Cover	46-7	Life of the vehicle
Exhaust Manifolds	46	2 years
Throttle Body Spacers	46-3	2 years
Fluid Filters	44	90 days
Pre-Filters	28	2 years
Heavy Duty OE Replacement	70	2 years
PowerSports OE Replacement	81, 87	2 years
PowerSports Intake Systems	85	2 years

No other warranty expressed or implied applies nor is any person or advanced FLOW engineering authorized to assume any other warranty. Some States do not allow the exclusion or limitation of incidental or consequential damages or do not allow limitations on how long an implied warranty lasts, so the above limitations or exclusions may not apply to you. This warranty gives you specific legal rights, and you may also have other rights which vary from State to State.



advanced FLOW engineering, inc.
252 Granite Street Corona, CA 92879
TEL: 951.493.7155 • TECH: 951.493.7100
E-Mail: Tech@aFepower.com



SECTION 1: PARTS & CHECKLIST

SCORCHER PRO



MICRO USB™ CABLE



HDMI/OBD II CABLE



TOOLS NEEDED:

Fuse Puller | Voltage Tester | Battery Charger | Pliers

SECTION 2: PRE-INSTALL CHECKLIST

BUSINESS HOURS

Technical Support is available Monday - Friday between the hours of 8 A.M. and 4:00 P.M. Pacific Standard Time and can be contacted via phone at (951) 493-7100 or through online at afepower.com/contact/tech-warranty.

INTERNET ACCESS

During the installation process you will need to connect the Scorcher Pro to the internet. Also, in the unlikely event that technical support is needed, internet access may be required to troubleshoot. Our Technical Support team may also need to remotely connect to your computer to fix any issues you may be having.

ALLOW TIME FOR INITIAL SETUP

Make sure you have at least an hour to complete the initial setup, update, and installation process.

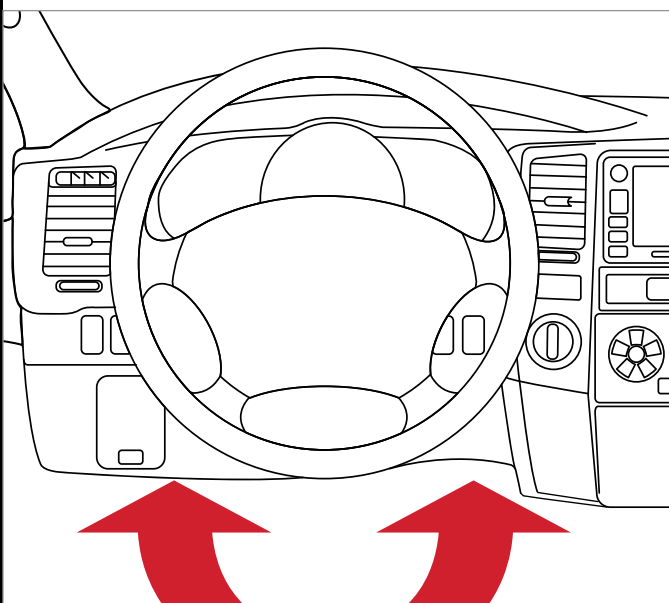
This device is not legal for sale or use in California on pollution controlled vehicles.

SECTION 3: READING THE VEHICLE INFORMATION

NOTE: Please make sure that all stock electronics are turned off and disconnect any aftermarket electronics as well.

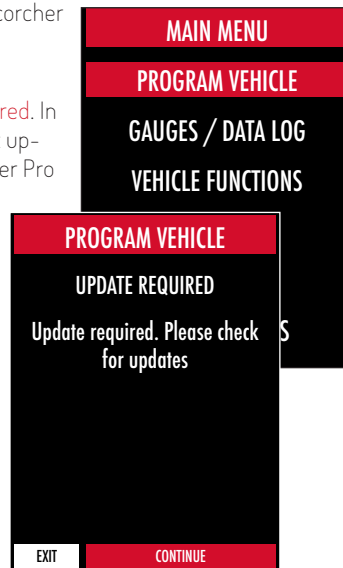
POWERING UP THE SCORCHER PRO

- Using the provided HDMI/OBDII Cable from Section 1, plug the device into the vehicle's OBDII Port commonly found within 24" of the steering column under the driver's side dash.



READING THE VEHICLE'S INFORMATION

- At this point, the key should be in the ignition, but in the OFF position until prompted to turn key ON/RUN position.
- From the Main Menu, select Program Vehicle.
- Processing Data: The Scorcher Pro is now reading your vehicle information.
- Updates: Internet Required. In order to install the most up-to-date files the Scorcher Pro now requires internet access. You can access these files via two methods found in Section 4.



SECTION 4: THREE METHODS FOR UPDATING THE SCORCHER PRO

METHOD #1: UPDATING VIA WIFI INSIDE THE VEHICLE

- Select Continue from the Internet Required screen.
- Select the WiFi network you would like to connect to. Use the middle button to confirm your selection.
- Enter the network pass code using the arrow keys and the middle button to select.
- Confirm the Wifi settings and select Continue.



METHOD #2: UPDATING VIA WIFI USING USB POWER

- Plug the Scorcher Pro into a computer or wall charger using the provided Micro USB Cable.
- Select "Program Vehicle" from the main menu.
- "Vehicle Updates" select "Confirm".
- "Device Updates" select "Continue".
- "Internet Required" select "Continue".
- Follow on screen instruction to set up WiFi.
- Follow on screen prompts until the "Up-To-Date" screen.
- Unplug and return to the vehicle.

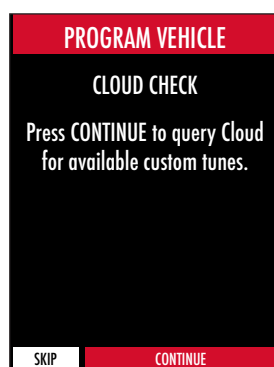
METHOD #3: UPDATING USING UPDATER SOFTWARE

NOTE: Unplug the device from your computer before proceeding.

- Go to: <http://afepower.com/tunersupport> and click on the "Support" tab at the top of the page.
- Locate and click the "Scorcher Pro" option and then select "Downloads". You will see "Download Now" under the "Updater" section. Click "Download Now" to begin downloading and installing updater on your computer.
- Wait for the program to download. Then double click & "Run" the Executable file if it does not open automatically.
- Follow the on-screen directions of the Device Update Software Installer until it allows you to click "Finish".
- Connect your Scorcher Pro to your Windows™ based PC using the provided Micro USB™ cable. We do not offer support for Apple computers at this time.
- Double click and open the Device Updater Software.
- Click "Automatically Check for Updates".
- Confirm the update by pressing the "Update" button. The update will now begin.
- Let the updater run until it says "Your device is now up to date".
- Unplug the device from your computer & proceed to Section 5.

SECTION 5: TUNING THE VEHICLE

- Cloud Check - If your dealer has sent you a custom tune using the cloud select "continue" to download the custom tune. If not select "Skip" and follow prompts.



- Select your tune from the following menu items:

Pre-Loaded Tune Files

Preloaded aFe Power tunes for use on stock vehicles only.

Custom Tune

Custom Tuning Dealer files, if there are any on the device.

Return to Stock

Restore original factory file to vehicle.

- Highlight the tune you wish to use and select confirm.

- Read and acknowledge the street use notice.
- Depending on your vehicle there may be further parameters you can change under "Additional Tune Option". Select "Change" to view the available options or "Skip" to continue with downloading the tune only.
- The Tune and any Additional Tune Options will now be installed. Follow the on-screen directions to finish the process.



NOTE: During the installation the Scorcher Pro will be married to your (One) vehicle. Once married there is an unlock fee to un-marry the device from your vehicle in order to install it on another vehicle.

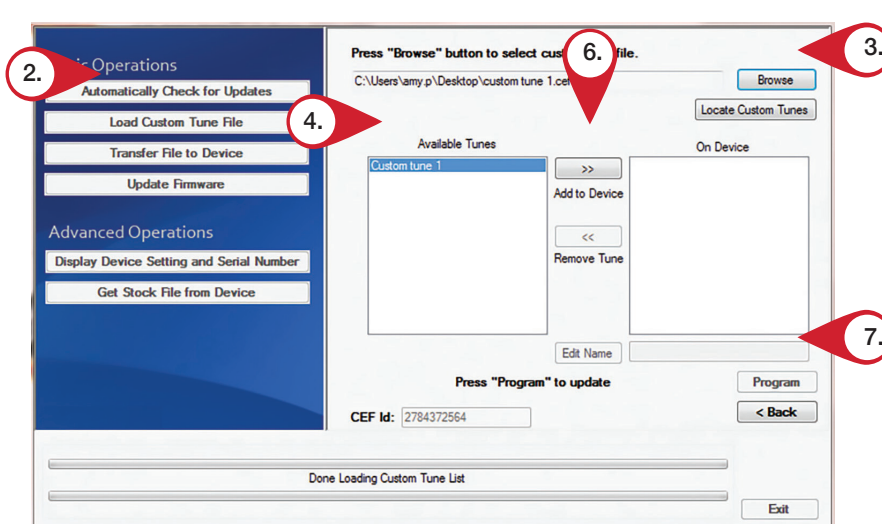


SECTION 6: LOADING CUSTOM TUNES

NOTE: Make sure the "Updater Software" from Section 4 Has been completed before proceeding with Section 6.

The Scorcher Pro is capable of having custom tune files sent over the Cloud straight to the device from aFe. If aFe has chosen to email your file, you can load them onto the device using the Device Updater software.

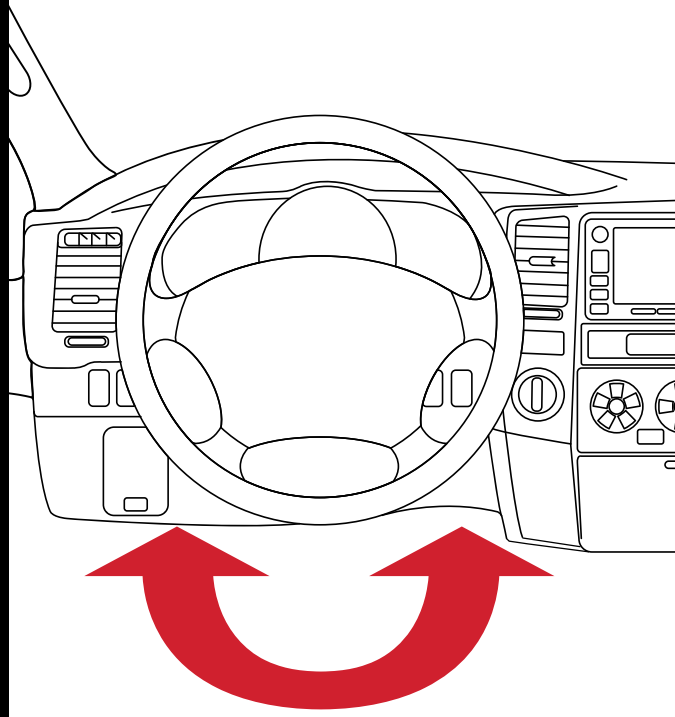
- From your e-mail, save your Custom Tunes (.cef files) to your computer's Desktop.
- Open the Updater software and click the Load Custom Tune File button.
- Click Browse and locate your custom tunes on your Desktop. Alternatively, you can also click Locate Custom Tunes.
- Highlight the Tune you wish to load. The tune you selected should move to the Available Tunes section.
- Select the listed tune in the Available Tunes section, then click the >> button to move the selected tune to the On Device section.
- Highlight the tune under the On Device section, then click program. Tunes can only be loaded one at a time. Repeat steps 3-7 for each tune, the device can hold up to ten custom tunes.



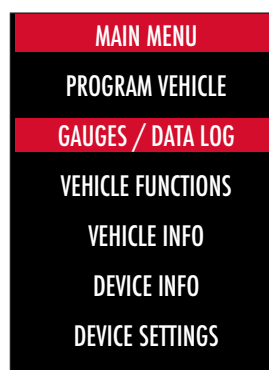
NOTE: To edit the name of the file as it appears on your device, you must highlight the file after transferring the file to the On Device section of Updater. Next to Edit Name, change the name of the file here. Select Save, then Program.

SECTION 7: ON-DEVICE DATA LOGGING

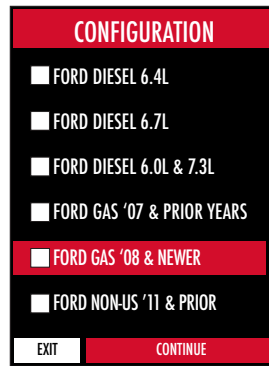
1. Connect the Scorcher Pro to the OBDII port.



2. From the **Main Menu**, scroll to **Gauges/Datalog** and press the center button on the Scorcher Pro.

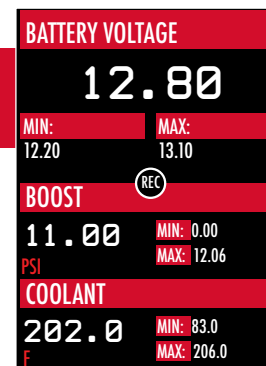


3. On **initial setup**, you will need to select **Configuration** press the center button, and select your vehicle from a list of data log files. In the future, you can continue without going through the vehicle selection.



4. Once you select your vehicle, the default gauges will show up and can now be monitored.

NOTE: Gauges are defaulted to metric units of measurement.



5. The items being monitored can be adjusted by pressing up or down on the device to highlight and then pressing the center button on the Scorcher Pro to select which reading you'd like to change. Within this menu, you can change the item you're monitoring, and the units in which it will be displaying. You can also change the layout of the gauges within this menu.

NOTE: If you are not seeing the value or the PID option you want, you can download and build your own configuration file using the Live Link datalogging software from <https://www.afepower.com/tunersupport>.

6. To start or stop data logging, press the center button on the Scorcher Pro while monitoring the gauges.
7. While monitoring, press right or left on the device to go to the Gauges/Datalog menu. From this menu, you may start recording, select a data log file with which to log, change the gauge layout, and reset the min/max values on the monitor.

SECTION 8: ADJUSTABLE OPTIONS EXPLAINED

DIESEL VEHICLE SPECIFIC OPTIONS

Performance/Extreme

The most aggressive preloaded diesel tune. Good for everyday use, racing, or economy but not recommended for any type of towing.

Street/Performance

The Street tune has less power than Performance with a moderate gain over stock, safe for light towing, under 5,000 lbs.

Towing/Tow

This tune should be used when towing any significant load as the shifting is specific for towing.

Trans Only

For heavy loads, the engine and boost are left stock and only the transmission shift points are tuned.

Jake Brake

Helps to increase engine braking while coasting to help lower braking temperatures.

Locked at CT

Keeps the torque converter locked during deceleration to aid in engine braking.

Lock In 1-2-3

Locks the torque converter in 1st, 2nd and 3rd gear.

Agg. Tow Haul

More aggressive shift schedule keeping the engine in its power band longer.

DIESEL & GAS VEHICLE OPTIONS:

Axle Ratio

Corrects shift patterns / speedometer for aftermarket axles / parts. (Not available on all vehicles)

Tire Size

Sets tire size to correct shift patterns/speedometer. (Not available on all vehicles)

Idle Speed

Sets idle speed in RPM.

Traction Control

On/Off setting disables traction control without using the TCS button.

WOT Shift

Increase or Decrease the WOT shift points of each gear individually by MPH.

Shift Pressure

% change in transmission pressure during shifts. (+ equals firmer, - equals softer)

GAS VEHICLE SPECIFIC OPTIONS:

Tune Type

Performance levels vary by the octane you select. Higher octane will provide higher performance increase.

Towing Tune

Adjusts the octane based tunes to focus more on towing over performance.

Global Spark

Add or remove timing advance to the entire RPM range.

Spark by RPM

Add or remove timing by RPM range. (0-2000) (2000-4000) (4000-8000)

WOT Fuel

Add or remove fuel at wide open throttle. (WOT)

Fuel Injectors

Allows you to adjust for different sized injectors. (Not available on all vehicles)

CMCV Deletes

Updates tune to handle the CMCV/IMRC delete plates modification.

Fan Control

Lowers the temperature at which the fan turns on.

Rev Limiter Drive

Sets rev limit in RPM while in drive.

Rev Limiter Neutral

Sets rev limit in RPM while in neutral.

Speed Limit

Remove, increase, or decrease the vehicle speed limiter. (AKA Governor)

NOTE: Adjustable Options vary for each vehicle and are not available on all vehicles.

SECTION 9: FREQUENTLY ASKED QUESTIONS

Q: When I try to update my tuner, it says "Please connect device" but it's already plugged in.

A: This is an issue with your PC's driver software. If problem persists, contact Tech Support at (951) 493-7100 or go to [afepower.com/contact/tech-warranty](https://www.afepower.com/contact/tech-warranty).

Q: When I connect the tuner to the vehicle, it doesn't power on.

A: Check for blown fuses specific to the OBDII Port/Cigarette Lighter for your vehicle.

Q: Does the tuner have to stay plugged in to keep the vehicle tuned?

A: No, after tuning the vehicle you can disconnect the programmer and store it.

Q: Can I stack/combine the Scorcher Pro with another chip or tuning module?

A: All chips/tuning products must be removed prior to tuning with any device.

Q: Can the vehicle be tuned while the engine is running?

A: We do not recommend tuning the vehicle while the engine is running as this can cause severe damage to the vehicle and the PCM.

Q: Should I return to stock before taking my car to the dealer?

A: We recommend that you always return your vehicle to stock before returning to the dealership as this prevents the tuner from becoming locked if the dealer updates the PCM.

Q: My device is telling me my car is a Shelby GT500 when I go to program vehicle or My device says Demo Mode when I read Device Info.

A: Check device settings and look for Demo Mode. If it is on disable it by turning it to off. This will cause the device to stop identifying your vehicle as a Shelby GT500 and will now operate as needed.

Q: My vehicle is modified and I loaded a preloaded tune. Now it won't run as expected.

A: In most cases a modified vehicle requires a custom tune. There are set ups in the preloaded tune options to adapt to certain cold air intakes, however this is per vehicle and what works for one vehicle may not work on another. Please contact a Custom Tune Dealer for a custom tune if your vehicle is heavily modified.

Q: I brought my vehicle to get work done at a dealership and they flashed the vehicle now the device is telling me it is the incorrect vehicle.

A: Technical Support at: (951) 493-7100.

Q: Can I tune more than one vehicle with this programmer?

A: No, during the installation the Scorcher Pro will be married to your vehicle. Once married there is an unlock fee to un-marry the device from your vehicle in order to install it on another vehicle.



AFEPOWER.COM